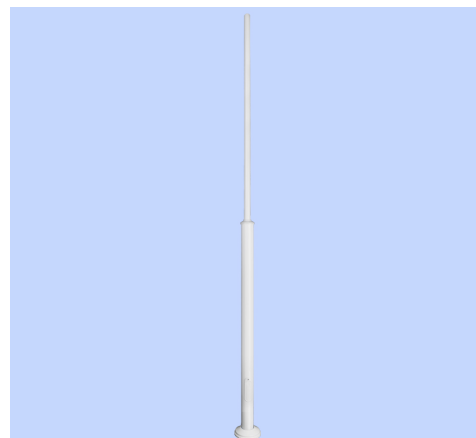


GMPPOLEF40C-W

Aluminium park light pole, Height: 4m, with circuit breakers, White

About Product

Aluminum Park Light Pole is Megalite state of the art design suitable for installing pole top lights in areas such as parks, pedestrian pathways, private property, etc under different weather conditions. Aesthetically designed, access to electrical compartment panel, various height options, high durability in different weather conditions, and easy installation are among the highlights of this light pole.



Technical Information

accessory Name:	Park Light Pole
Catalog Code/product code:	GMPPOLEF40C-W
Application:	Green area
Body Material:	Extruded aluminum profile
Body Coating:	Powder coated
Body Color:	White
RAL:	RAL9003
Packaging type:	Nylon cover and carton
Other Characteristics:	Modern Mechanism for easy transportation and storage
Weight(Kg):	13.4
Dimensions(mm):	-
Height (m):	4
Access to Electrical Equipment Valves:	Yes - MCB included
Anchor Bolt No.:	4
Pole Diameter on Luminaire Side (mm):	60

GMPPOLEF40C-W

Aluminium park light pole, Height: 4m, with circuit breakers, White

Dimensional Drawing

